

ELS Vision3 Information
元景資訊股份有限公司

MOBILE RACK BACKPLANE
SAS 12G NVMe U.2 M.2

Taiwan Service
China Factory
World-wide Distributors

Note

If you need more information, please e-mail to the following address:
V3.service@elstorage.com.tw



|| website ||

Index

3.5" Single HDD Mobile Rack	1-2
3.5" MiniSAS HD Backplane for 4 HDD	3
3.5" Railway Backplane for 3 / 4 / 5 HDD	4
3.5" Trayless Backplane for 3 / 4 / 5 HDD	5
3.5" WM Power Switch Backplane for 3 / 4 / 5 x HDD	6
3.5" Pro 12G Power Switch Backplane	7
NVMe Cage for U.2/ M.2 SSD	8
Introduction of 2.5" Slim Module Series	9
2.5" Slim Module for 2 / 3 / 4 SSD	10
2.5" Single HDD Adapter	11-12
2.5" 2 SSD Backplane	13
2.5" 4 SSD Backplane	14
2.5" 6 / 8 SSD Backplane	15
3.5" Server Chassis Backplane Module	16
2.5" Server Chassis Backplane Module	17

3.5" Single HDD Mobile Rack

1 HDD



Model	N-11WM
Form Factor	1 x 5.25" Drive Bay
Support HDD	3.5" SATA 6G & SAS 12G HDD
Signal Control	1 x 7pin SATA
Power Control	1 x 15pin SATA + 1 x 4pin
Security Design	Dual-Function Metal Key Lock Power & Mechanical Lock
Material	Aluminum Body
LED Indication	Power on-Green/ HDD Accessing- Orange
Fan	1 x 4cm Fan
Dim & Weight	188.5(L) X 146(W) X 42(H) mm/ 0.73kg

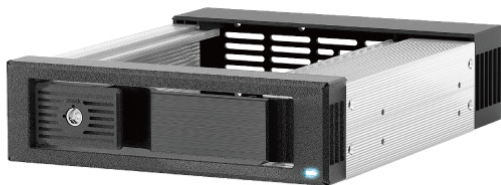
6G Version : S-11WM



Model	N-16TM
Form Factor	1 x 5.25" Drive Bay
Support HDD	2.5" /3.5" SATA 6G & SAS 12G HDD/ SSD
Signal Control	1 x 7pin SATA
Power Control	1 x 15pin SATA
Security Design	Metal Key Lock
Material	Aluminum Body & Tray
LED Indication	Power on-Green/ HDD Accessing- Orange
Fan	(Optional)
Dim & Weight	187(L) X 147(W) X 42(H) mm/ 0.43kg

6G Version : S-16TM

12G Power Button Version : N-16TM Pro



Trayless

Model	N-16TL
Form Factor	1 x 5.25" Drive Bay
Support HDD	3.5" SATA 6G & SAS 12G HDD
Signal Control	1 x 7pin SATA
Power Control	1 x 15pin SATA
Security Design	Metal Key Lock
Material	Aluminum Body & Bezel
LED Indication	Power on-Blue/ HDD Accessing- Purple
Fan	(Optional)
Dim & Weight	180(L) X 146(W) X 42(H) mm/ 0.28kg

6G Version : S-16TL

12G Power Button Version : N-16TL Pro



HDD Carrier for N-11WM / S-11WM
T-11A
For 3.5" HDD Carrier,with Fan
Aluminum Body & Plastic Handle
Dim:170.5(L) x 121.6(W) x 41.5(H) mm



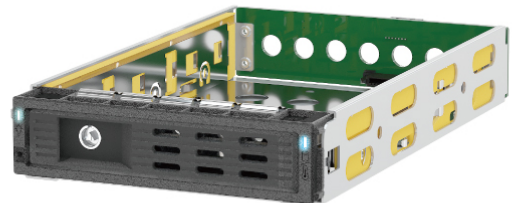
HDD Carrier for N-16TM / S-16TM
T-12A
For 2.5"/ 3.5" HDD Carrier
Aluminum Body & Handle
Dim:159.5(L) x 113.5(W) x 26.5(H) mm





Model	S-13WM
Form Factor	1 x 5.25" Drive Bay
Support HDD	3.5" SATA & SAS 6G HDD
Signal Control	1 x 7pin SATA
Power Control	1 x 15pin SATA + 1 x 4pin
Security Design	Mechanical Lock Power Control Button
Material	Plastic
LED Indication	Power on-Green/ HDD Accessing- Orange
Fan	1 x 8cm Blower Fan
Dim & Weight	188(L) X 146(W) X 42(H) mm/ 0.4kg

Model	S-14WM
Form Factor	1 x 5.25" Drive Bay
Support HDD	2.5"/ 3.5" SATA & SAS 6G HDD/ SSD
Signal Control	1 x 7pin SATA
Power Control	1 x 15pin SATA
Security Design	Mechanical Lock Power Control Button
Material	Aluminum Body & Tray
LED Indication	Power on-Green/ HDD Accessing- Orange
Fan	1 x 8cm Blower Fan
Dim & Weight	189(L) X 146(W) X 42(H) mm/ 0.85kg



Model	S-12TM
Form Factor	Slim Single HDD Rack
Support HDD	2.5"/ 3.5" SATA & SAS 6G HDD/ SSD
Signal Control	1 x 7pin SATA
Power Control	1 x 15pin SATA
Security Design	Metal Key Lock
Material	Aluminum Body & Tray
LED Indication	Power on-Green/ HDD Accessing- Orange
Fan	N/A
Dim & Weight	187.5(L) X 126(W) X 28(H) mm/ 0.31kg

Model	M-0101S
Form Factor	Slim Single HDD Rack
Support HDD	2.5"/ 3.5" SATA & SAS 6G HDD/ SSD
Signal Control	1 x 7pin SATA
Power Control	1 x 15pin SATA
Security Design	Metal Key Lock
Material	Metal Body & Stainless Tray
LED Indication	Power on-Green/ HDD Accessing- Blue
Fan	N/A
Dim & Weight	188.6(L) X 108(W) X 29(H) mm/ 0.28kg

HDD Carrier for S-13WM
T-13A
For 3.5" HDD Carrier
Plastic
Dim:173(L)x116(W)x29(H) mm



HDD Carrier for S-14WM
T-14A
For 2.5"/ 3.5" HDD Carrier
Aluminum Tray & Plastic Handle
Dim:129.5(L) x 113.2(W) x 26.8(H) mm

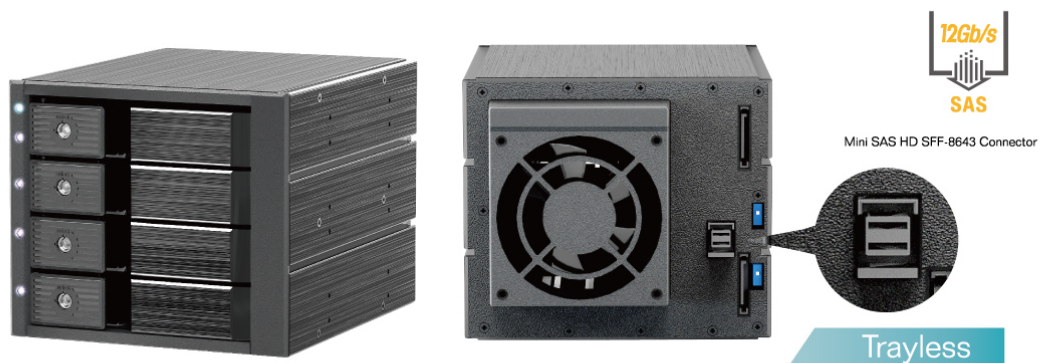


HDD Carrier for M-0101S
T-15A
For 2.5"/ 3.5" HDD Carrier
Stainless Tray & Plastic Handle
Dim:172.1(L) x 105.6(W) x 28.3(H) mm

3.5" MiniSAS HD Backplane 4 HDD



Model	N-46TM-MS
Form Factor	3 x 5.25" Drive Bay
Support HDD	2.5" /3.5" SATA 6G & SAS 12G HDD/ SSD x 4
Signal Control	1 x Mini SAS HD SFF-8643
Power Control	2 x 15pin SATA
Security Design	Metal Key Lock
Material	Aluminum Body & HDD Tray
LED Indication	Power on-Green/ HDD Accessing- Orange Overheating/ Fan Failure- Red
Fan	1 x 8cm Fan
Dim & Weight	211.2(L) X 145.8(W) X 125.5 (H) mm/ 1.86kg



Model	N-46TL-MS
Form Factor	3 x 5.25" Drive Bay
Support HDD	3.5" SATA 6G & SAS 12G HDD x 4
Signal Control	1 x Mini SAS HD SFF-8643
Power Control	2 x 15pin SATA
Security Design	Metal Key Lock
Material	Aluminum Body
LED Indication	Power on-Blue/ HDD Accessing- Purple Blinking
Fan	1 x 8cm Fan
Dim & Weight	198(L) X 146(W) X 126(H) mm/ 1.45kg

12G Power Button Version : N-46TL-MS Pro



HDD Carrier for N-46TM-MS
T-12A
For 2.5"/ 3.5" HDD Carrier
Aluminum Body & Handle
Dim:159.5(L) x 113.5(W) x 26.5(H) mm



Model	N-36TM
Form Factor	2 x 5.25" Drive Bay
Support HDD	2.5" /3.5" SATA 6G & SAS 12G HDD/ SSD x 3
Signal Control	3 x 7pin SATA
Power Control	2 x 15pin SATA
Security Design	Metal Key Lock
Material	Aluminum Body & Tray
LED Indication	Power on-Green/ HDD Accessing- Orange Overheating/ Fan Failure- Red
Fan	1 x 7cm Fan
Dim & Weight	207(L) X 145(W) X 85.6(H) mm/ 1.1kg

6G Version: S-36TM

Model	N-46TM
Form Factor	3 x 5.25" Drive Bay
Support HDD	2.5" /3.5" SATA 6G & SAS 12G HDD/ SSD x 4
Signal Control	4 x 7pin SATA
Power Control	2 x 15pin SATA
Security Design	Metal Key Lock
Material	Aluminum Body & Tray
LED Indication	Power on-Green/ HDD Accessing- Orange Overheating/ Fan Failure- Red
Fan	1 x 8cm Fan
Dim & Weight	211.2(L) X 145.8(W) X 125.5(H) mm/ 1.86kg

6G Version: S-46TM



Model	N-56TM
Form Factor	3 x 5.25" Drive Bay
Support HDD	2.5" /3.5" SATA 6G & SAS 12G HDD/ SSD x 5
Signal Control	5 x 7pin SATA
Power Control	2 x 15pin SATA
Security Design	Metal Key Lock
Material	Aluminum Body & Tray
LED Indication	Power on-Green/ HDD Accessing- Orange Overheating/ Fan Failure- Red
Fan	1 x 8cm Fan
Dim & Weight	211.2(L) X 126(W) X 145.8(H) mm/ 2.0kg

6G Version: S-56TM



HDD Carrier for N-36TM/ N-46TM/ N-56TM
T-12A
For 2.5" / 3.5" HDD Carrier
Aluminum Body & Handle
Dim:159.5(L) x 113.5(W) x 26.5(H) mm

3.5" Trayless Backplane

3 / 4 / 5 HDD



Trayless



Trayless

Model	N-36TL
Form Factor	2 x 5.25" Drive Bay
Support HDD	3.5" SATA 6G & SAS 12G HDD x 3
Signal Control	3 x 7pin SATA
Power Control	2 x 15pin SATA
Security Design	Metal Key Lock
Material	Aluminum Body
LED Indication	Power on- Blue/ HDD Accessing- Purple
Fan	1 x 7cm Fan
Dim & Weight	194(L) X 146(W) X 86(H) mm/ 1.1kg

Model	N-46TL
Form Factor	3 x 5.25" Drive Bay
Support HDD	3.5" SATA 6G & SAS 12G HDD x 4
Signal Control	4 x 7pin SATA
Power Control	2 x 15pin SATA
Security Design	Metal Key Lock
Material	Aluminum Body
LED Indication	Power on- Blue/ HDD Accessing- Purple
Fan	1 x 8cm Fan
Dim & Weight	198(L) X 146(W) X 126(H) mm/ 1.45kg

6G Version: S-36TL

12G Power Button Version : N-36TL Pro

6G Version: S-46TL

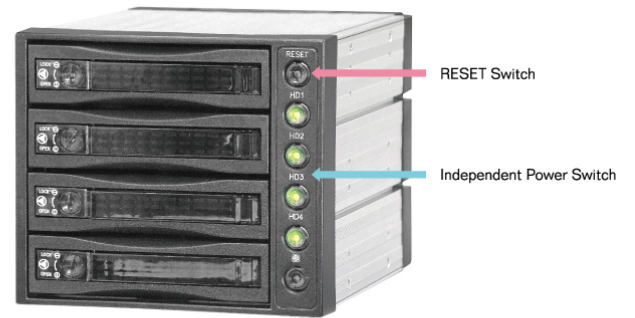
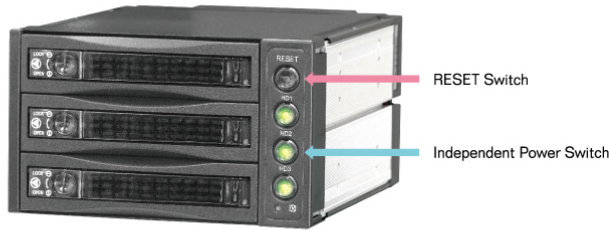
12G Power Button Version : N-46TL Pro



Trayless

Model	N-56TL
Form Factor	3 x 5.25" Drive Bay
Support HDD	3.5" SATA 6G & SAS 12G HDD x 5
Signal Control	5 x 7pin SATA
Power Control	2 x 15pin SATA
Security Design	Metal Key Lock
Material	Aluminum Body
LED Indication	Power on- Blue/ HDD Accessing- Purple
Fan	1 x 8cm Fan
Dim & Weight	199(L) X 146(W) X 126(H) mm/ 1.64kg

6G Version: S-56TL

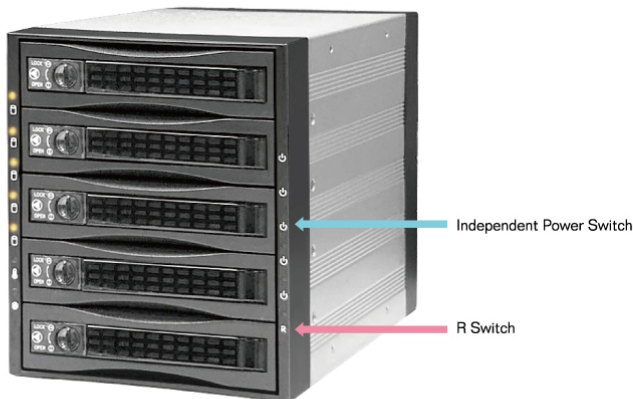


Model	S-36WM
Form Factor	2 x 5.25" Drive Bay
Support HDD	2.5"/ 3.5" SATA & SAS 6G HDD/ SSD x 3
Signal Control	3 x 7pin SATA
Power Control	2 x 15pin SATA + 2 x 4pin
Security Design	Mechanical Lock/ HDD Power Switch Fan Sensor & Buzzer
Material	Aluminum Body
LED Indication	Power on-Green/ HDD Accessing- Orange Overheating/ Fan Failure- Red
Fan	1 x 8cm Fan
Dim & Weight	202(L) X 146(W) X 86(H) mm/ 1.13kg

T-12A HDD Carrier Version: S-36WT
(Aluminum Bezel with Key Lock Security)

Model	S-46WM
Form Factor	3 x 5.25" Drive Bay
Support HDD	2.5"/ 3.5" SATA & SAS 6G HDD/ SSD x 4
Signal Control	4 x 7pin SATA
Power Control	2 x 15pin SATA + 2 x 4pin
Security Design	Mechanical Lock/ HDD Power Switch Fan Sensor & Buzzer
Material	Aluminum Body
LED Indication	Power on-Green/ HDD Accessing- Orange Overheating/ Fan Failure- Red
Fan	1 x 8cm Fan
Dim & Weight	202(L) X 146(W) X 126(H) mm/ 1.7kg

T-12A HDD Carrier Version: S-46WT
(Aluminum Bezel with Key Lock Security)



Model	S-56WM
Form Factor	3 x 5.25" Drive Bay
Support HDD	2.5"/ 3.5" SATA & SAS 6G HDD/ SSD x 5
Signal Control	5 x 7pin SATA
Power Control	2 x 15pin SATA
Security Design	Mechanical Lock/ Fan Sensor & Buzzer HDD Power Switch
Material	Aluminum Body
LED Indication	Power on-Green/ HDD Accessing- Orange Overheating/ Fan Failure- Red
Fan	1 x 8cm Fan
Dim & Weight	207(L) X 126(W) X 146(H) mm/ 1.9kg

T-12A HDD Carrier Version: S-56WT
(Aluminum Bezel with Key Lock Security)

3.5" WM Power Button Backplane Series

- Independent Power Switch to Turn on / off Each HDD.
- When System Temperature Exceeds the Limit, Default Setting 60°C, the Buzzer Sounds & Overheating LED Blinks for Alarm. Press the "RESET" or "R" Switch to Turn off the Alarm.
- T-14A HDD Carrier Are Standard Equipment for 3.5" WM Power Button Backplanes, You Can Also Use T-12A HDD Carrier with Aluminum Bezel & Key Lock Security for Option.



HDD Carrier for S-36WT / S-46WT / S-56WT
T-12A
For 2.5"/ 3.5" HDD Carrier
Aluminum Body & Handle
Dim:159.5(L) x 113.5(W) x 26.5(H) mm



HDD Carrier for S-36WM/ S-46WM/ S-56WM
T-14A
For 2.5"/3.5" HDD carrier
Aluminum Tray & Plastic Handle
Dim:159.5(L) x 113.2(W) x 26.8(H) mm

3.5" Pro 12G Power Switch Backplane



Model	N-16TM-Pro
Form Factor	1 x 5.25" Drive Bay
Support HDD	2.5" /3.5" SATA 6G & SAS 12G HDD/ SSD
Signal Control	1 x 7pin SATA
Power Control	1 x 15pin SATA
Security Design	Metal Key Lock/ Independent HDD Power Switch
Material	Aluminum Body & Tray
LED Indication	Power on-Green/ HDD Accessing- Orange
Fan	(Optional)
Dim & Weight	187(L) x 147(W) x 42(H) mm/ 0.43kg



Model	N-16TL-Pro
Form Factor	1 x 5.25" Drive Bay
Support HDD	3.5" SATA 6G & SAS 12G HDD
Signal Control	1 x 7pin SATA
Power Control	1 x 15pin SATA
Security Design	Metal Key Lock/ Independent HDD Power Switch
Material	Aluminum Body & Front Bezel, Trayless Design
LED Indication	Power on-Green/ HDD Accessing- Orange
Fan	(Optional)
Dim & Weight	179(L) x 146(W) x 42(H) mm/ 0.4kg



Model	N-36TL-Pro
Form Factor	2 x 5.25" Drive Bay
Support HDD	3.5" SATA 6G & SAS 12G HDD x 3
Signal Control	3 x 7pin SATA
Power Control	2 x 15pin SATA
Security Design	Metal Key Lock/ Independent HDD Power Switch
Material	Aluminum Body & Front Bezel, Trayless Design
LED Indication	Power on- Blue/ HDD Accessing- Purple
Fan	1 x 7cm fan
Dim & Weight	194(L) x 146(W) x 86(H) mm/ 1.1kg



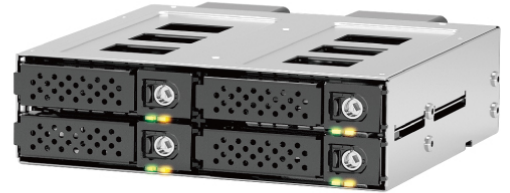
Model	N-46TL-Pro
Form Factor	3 x 5.25" Drive Bay
Support HDD	3.5" SATA 6G & SAS 12G HDD x 4
Signal Control	4 x 7pin SATA
Power Control	2 x 15pin SATA
Security Design	Metal Key Lock/ Independent HDD Power Switch
Material	Aluminum Body & Front Bezel, Trayless Design
LED Indication	Power on- Blue/ HDD Accessing- Purple
Fan	1 x 8cm fan
Dim & Weight	198(L) x 146(W) x 126(H) mm/ 1.45kg

Mini SAS HD SFF-8643 Version : N-46TL-MS Pro

NVMe Cage for U.2/ M.2 SSD



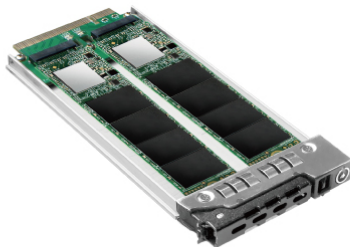
Versatile Choices for U.2 NVMe Backplane Cages



Model	N-19NVMe
Form Factor	Half 5.25" Drive Bay Width
Support HDD	1 x 2.5" NVMe U.2
HDD Height	Upto 15mm
Signal Control	1 x SFF-8643 Connector
Power Control	1 x 15pin SATA
Security Design	Metal Key Lock
Material	Metal Body & Stainless Tray
LED Indication	Power On- Green HDD Accessing- Orange
Fan	N/A
Dim	104.5(L) x 72.5(W) x 20.8(H) mm
Weight	0.3kg

Model	N-29NVMe
Form Factor	Half 5.25" Drive Bay Width
Support HDD	2 x 2.5" NVMe U.2
HDD Height	Upto 15mm
Signal Control	2 x SFF-8643 Connector
Power Control	1 x 15pin SATA
Security Design	Metal Key Lock
Material	Metal Body & Stainless Tray
LED Indication	Power On- Green HDD Accessing- Orange
Fan	N/A, With Jumper for Extension Fan Connection
Dim	143.9(L) x 72.5(W) x 40(H) mm
Weight	0.21kg

Model	N-49NVMe
Form Factor	1 x 5.25" Drive Bay
Support HDD	4 x 2.5" NVMe U.2
HDD Height	Upto 15mm
Signal Control	4 x SFF-8643 Connector
Power Control	2 x 15pin SATA
Security Design	Metal Key Lock
Material	Metal Body & Stainless Tray
LED Indication	Power On- Green HDD Accessing- Orange
Fan	4020 Fan x 2
Dim	159(L) x 145.8(W) x 41.6(H) mm
Weight	0.62kg



Internal Backplane Cage

External Enclosure



Model	N-12M3-2280
Material	Aluminum
Connection Interface	PCI-E 3.0 x 2
Color	Black
Transfer Rate	PCI-E GEN3 x 4 64Gt/s
Controller	N/A
Security Design	Metal Key Lock
Power Switch	With Power On/ Off Switch
Support type of M.2 SSD	M Key NVMe Type M.2 SSD x 2 Support 22mm x 60mm or 22mm x 80mm size
LED Indication	Power On- Green HDD Accessing- Orange Blinking

Model	N-12M3-22110
Material	Aluminum
Connection Interface	PCI-E 3.0 x 2
Color	Black
Transfer Rate	PCI-E GEN3 x 4 64Gt/s
Controller	N/A
Security Design	Metal Key Lock
Power Switch	With Power On/ Off Switch
Support type of M.2 SSD	M Key NVMe Type M.2 SSD x 2 Support 22mm x 60mm or 22mm x 80mm , 22mmx110mm size
LED Indication	Power On- Green HDD Accessing- Orange Blinking

Model	E-M01C
Material	Aluminum
Connection Interface	USB Type-C
Color	Silver/ Rose Gold
Transfer Rate	USB 3.1 Gen 2 up to 10Gbps (Compatible with USB 3.1 Gen 1 / 3.0 / 2.0 / 1.1)
Controller	JMS583
Support type of M.2 SSD	M Key NVMe M.2 SSD x 1 Support 22mm x 60mm or 22mm x 80mm size
LED Indication	Power On- Green HDD Accessing- Green Blinking



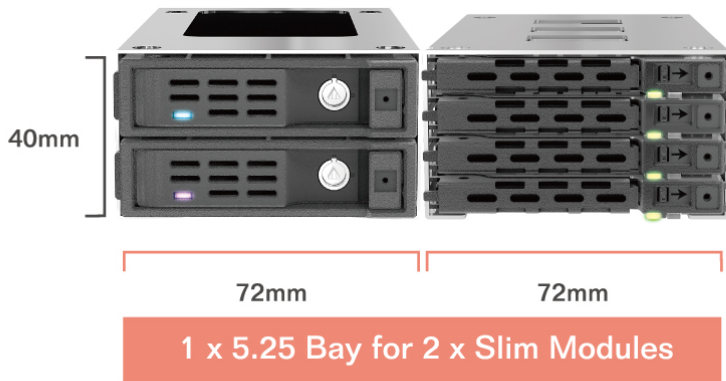
(Introduction Video)



Half 5.25" Bay Size

For Only Half 1 x 5.25 Bay to Fit for Different Qty SSD/HDD.

With the Needs to Fit More HDDS on the Compact Space, ELS Introduces the Slim Modules Series for Mini/Compact Size HDD/SSD Storage Solutions.



N-48SS



4 x HDD/SSD
7mm Height

N-37SS



3 x HDD/SSD
10mm Height

N-29SS



2 x HDD/SSD
15mm Height

N-29NVMe



2 x NVMe(U.2)
15mm Height



N-29SS15



N-37SS15



N-48SS15



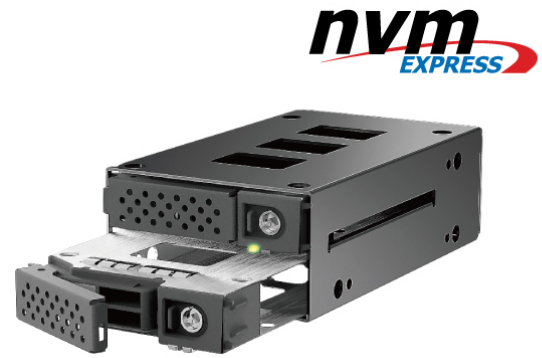
N-29SS15U



N-37SS15U



N-48SS15U



Model	N-29SS
Form Factor	Half 5.25" Drive Bay Width
Support HDD	2 x 2.5" SATA 6G & SAS 12G HDD/ SSD
HDD Height	Upto 15mm
Signal Control	2 x 7pin SATA
Power Control	1 x 15pin SATA
Security Design	Metal Key Lock
Material	Metal Body & Stainless Tray
LED Indication	Power on- Green/ HDD Accessing- Orange
Fan	N/A , With Jumper for Extension Fan Connection
Dim & Weight	140.5(L) X 72.5(W) X 40(H) mm/ 0.21kg
Optional	BF-15 bracket for N-29SS15

Model	N-29NVMe
Form Factor	Half 5.25" Drive Bay Width
Support HDD	2 x 2.5" NVMe, U.2
HDD Height	Upto 15mm
Signal Control	2 x SFF-8643 Connectors
Power Control	1 x 15pin SATA
Security Design	Metal Key Lock
Material	Metal Body & Stainless Tray
LED Indication	Power on- Green/ HDD Accessing- Orange
Fan	N/A , With Jumper for Extension Fan Connection
Dim & Weight	143.9(L) X 72.5(W) X 40(H) mm/ 0.21kg
Optional	BF-15 bracket for N-29NVMe15



HDD Carrier for N-29SS/ N-29NVMe
T-109A
For 2.5" HDD/SSD Carrier
Height upto 15mm, Keylock
Stainless Tray & Metal Handle



Model	N-37SS
Form Factor	Half 5.25" Drive Bay Width
Support HDD	2 x 2.5" SATA & SAS 12G HDD/ SSD
HDD Height	Upto 10mm
Signal Control	3 x 7pin SATA
Power Control	1 x 15pin SATA
Security Design	Metal Key Lock
Material	Metal Body & Stainless Tray
LED Indication	Power on- Green/ HDD Accessing- Orange
Fan	N/A , With Jumper for Extension Fan Connection
Dim & Weight	140.5(L) X 72.5(W) X 40(H) mm/ 0.21kg
Optional	BF-15 bracket for N-37SS15

Model	N-48SS
Form Factor	Half 5.25" Drive Bay Width
Support HDD	4 x 2.5" SATA 6G & SAS 12G HDD/ SSD
HDD Height	Upto 7mm
Signal Control	4 x 7pin SATA
Power Control	1 x 15pin SATA
Security Design	Mechanical Lock
Material	Metal Body & Stainless Tray
LED Indication	Power on- Green/ HDD Accessing- Orange
Fan	N/A , With Jumper for Extension Fan Connection
Dim & Weight	140.5(L) X 72.5(W) X 40(H) mm/ 0.38kg
Optional	BF-15 bracket for N-48SS15



HDD Carrier for N-37SS
T-107A
For 2.5" HDD/SSD Carrier
Height upto 10mm, Keylock
Stainless Tray & Metal Handle



HDD Carrier for N-48SS
T-108A
For 2.5" HDD/SSD Carrier
Height upto 7mm
Stainless Tray & Metal Handle

2.5" Single HDD Adapter

1 SSD



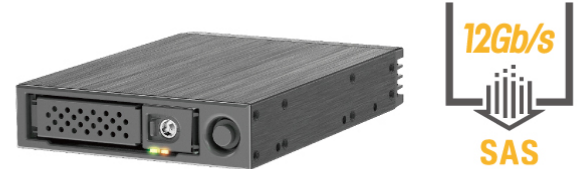
Bracket is Optional

Model	SS-17TM
Form Factor	1 x Full PCI Bracket Size
Support HDD	2.5" SATA & SAS 6G HDD/ SSD
HDD Height	Upto 10mm
Signal Control	1 x 7pin SATA
Power Control	1 x mini 4pin
Security Design	Metal Key Lock
Material	Metal Body & Stainless Tray
LED Indication	Power on-Green/ HDD Accessing- Orange
Fan	N/A
Dim & Weight	138.2(L) X 72.5(W) X 14.7(H) mm/ 0.2kg

With PCI Bracket Version: SS-17TM-P

Model	SS-18TM-P
Form Factor	1 x Full PCI Bracket Size
Support HDD	2.5" SATA & SAS 6G HDD/ SSD
HDD Height	Upto 7mm
Signal Control	1 x 7pin SATA
Power Control	1 x mini 4pin
Security Design	Mechanical Lock
Material	Metal Body & Stainless Tray
LED Indication	Power on-Green/ HDD Accessing- Orange
Fan	N/A
Dim & Weight	148.7(L) X 120.5(W) X 21.5(H) mm/ 0.16kg

W/O PCI Bracket Version: SS-18TM



Model	N-10SS
Form Factor	1 x 3.5" Bay
Support HDD	1 x 2.5" SATA 6G & SAS 12G HDD/ SSD
HDD Height	Upto 15mm
Signal Control	1 x 7pin SATA
Power Control	1 x 15pin SATA
Security Design	Mechanical Sliding Lock
Material	Plastic
LED Indication	Power on-Blue/ HDD Accessing- Purple
Fan	N/A
Dim & Weight	146(L) X 101(W) X 25(H) mm/ 0.14kg

6G Version: SS-10WM

Model	N-12SS
Form Factor	1 x 3.5" Bay
Support HDD	1 x 2.5" SATA 6G & SAS 12G HDD/ SSD
HDD Height	Upto 15mm
Signal Control	1 x 7pin SATA
Power Control	1 x 15pin SATA
Security Design	Metal Key Lock/ Power Control Button
Material	Aluminum Body & Stainless Tray
LED Indication	Power on-Green/ HDD Accessing- Orange
Fan	N/A
Dim & Weight	145.7(L) X 101.5(W) X 25.4(H) mm/ 0.21kg



Model	N-13SS
Form Factor	1 x 3.5" Bay
Support HDD	1 x 2.5" SATA 6G & SAS 12G HDD/ SSD
HDD Height	Upto 15mm
Signal Control	1 x 7pin SATA
Power Control	1 x 15pin SATA
Security Design	Metal Key Lock & Power Control Button
Material	Aluminum Body & Handle
LED Indication	Power on-Blue/ HDD Accessing- Purple
Fan	N/A
Dim & Weight	145.7(L) X 101.5(W) X 25.4(H) mm/ 0.21kg



HDD Carrier for SS-17TM
T-107A
For 2.5" HDD/SSD Carrier
Height upto 10mm, Keylock
Stainless Tray & Metal Handle



HDD Carrier for SS-18TM-P
T-108A
For 2.5" HDD/SSD Carrier
Height upto 7mm
Stainless Tray & Metal Handle



HDD Carrier for N-12SS
T-109A
For 2.5" HDD/SSD Carrier
Height upto 15mm, Keylock
Stainless Tray & Metal Handle



Trayless

Model	N-28SS
Form Factor	Half 5.25" Drive Bay Width
Support HDD	2 x 2.5" SATA & SAS 12G HDD/ SSD
HDD Height	Up to 7mm
Signal Control	2 x 7pin SATA
Power Control	1 x 15pin SATA
Security Design	Mechanical Lock
Material	Metal Body & Stainless Tray
LED Indication	Power on- Green/ HDD Accessing- Orange
Fan	N/A
Dim & Weight	138.3(L) x 72.5(W) x 21.2(H) mm/ 0.3kg

Model	N-20SS
Form Factor	1 x 3.5" Bay
Support HDD	2 x 2.5" SATA 6G & SAS 12G HDD/ SSD
HDD Height	Upto 10mm
Signal Control	2 x 7pin SATA
Power Control	1 x 15pin SATA
Security Design	Mechanical Lock
Material	Aluminum Body & Plastic Handle
LED Indication	Power on-Green/ HDD Accessing- Green
Fan	N/A
Dim & Weight	146(L) X 101.5(W) X 25.4(H) mm/ 0.21kg



Trayless



Trayless

Model	SS-21TL
Form Factor	1 x 3.5" Bay
Support HDD	2 x 2.5" SATA & SAS 6G HDD
HDD Height	Upto 10mm
Signal Control	2 x 7pin SATA
Power Control	1 x 15pin SATA
Security Design	Metal Key Lock
Material	Aluminum Body & Handle
LED Indication	Power on - Green/ HDD Accessing - Orange
Fan	N/A
Dim & Weight	147.5(L) X 101.5(W) X 25.4(H) mm/ 0.21kg

Model	SS-21RI
Form Factor	1 x 3.5" Bay for 2 x SATA SSD/HDD
Support HDD	2 x 2.5" SATA RAID 3G/bps
HDD Height	Upto 10mm
Signal Control	2 x 7pin SATA
Power Control	1 x 15pin SATA
RAID Setting	1 x RAID Jumper Setting Pin Header
Function	Upgrade to RAID 1 Directly W/O Format Current Data RAID Rebuilding (200GB/Hour Max.) Hot Swap, Disk Roaming, Sleeping Mode Online HDD Bad Sectors Detecting and Repair LED Indication For Working Status, Malfunction, Buzzer Alarm
Security Design	Metal Key Lock, for SSD upto 9.5mm height
Material	Aluminum Body & Handle
LED Indication	Power on-Blue/ Disk Date Error-Red RAID Building- Purple/ RAID Built Read- LED Off
Dim & Weight	147.5(L) X 101.5(W) X 25.4(H) mm/ 0.21kg



HDD Carrier for N-28SS
T-108A
For 2.5" HDD/SSD Carrier
Height upto 7mm
Stainless Tray & Metal Handle

2.5" 4 SSD Backplane

4 SSD



Model	N-49SS
Form Factor	1 x 5.25" Drive Bay
Support HDD	4 x 2.5" SATA 6G & SAS 12G HDD/ SSD
HDD Height	Upto 15mm
Signal Control	4 x 7pin SATA
Power Control	1 x 15pin SATA
Security Design	Metal Key Lock
Material	Metal Body & Stainless Tray
LED Indication	Power on- Green/ HDD Accessing- Orange
Fan	4020 Fan x 1
Dim & Weight	159(L) X 145.8(W) X 41.6(H) mm/ 0.59kg
Optional	Sensor kit For Overheating & Fan Failure Overheating- Red Blinking(Fast) Fan Failure- Red Blinking(Slow)



Model	SS-41WM
Form Factor	1 x 5.25" Drive Bay
Support HDD	4 x 2.5" SATA & SAS 6G HDD/ SSD
HDD Height	Upto 15mm
Signal Control	4 x 7pin SATA
Power Control	1 x 15pin SATA
Security Design	Metal Key Lock
Material	Aluminum Body & Stainless Tray
LED Indication	Power on- Blue / HDD Accessing - Purple
Fan	4020 Fan x 2
Dim & Weight	174(L) X 146(W) X 42(H) mm/ 0.67kg

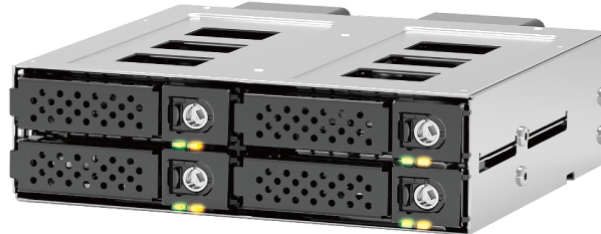
Model	SS-46TM
Form Factor	1 x 5.25" Drive Bay
Support HDD	4 x 2.5" SATA & SAS 6G HDD/ SSD
HDD Height	Upto 15mm
Signal Control	4 x 7pin SATA
Power Control	1 x 15pin SATA
Security Design	Metal Key Lock
Material	Aluminum Body & Tray
LED Indication	Power on- Blue/ HDD Accessing- Purple Overheating- Red Blinking(Fast) Fan Failure- Red Blinking(Slow)
Fan	4020 Fan x 2
Dim & Weight	180(L) X 146(W) X 42(H) mm/ 0.9kg



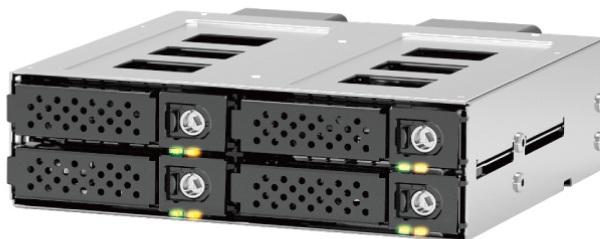
HDD Carrier for SS-41WM
T-102A
For 2.5" HDD/SSD Carrier
Height upto 15mm, Keylock
Stainless Tray & Plastic Upper Cover



HDD Carrier for SS-46TM
T-104A
For 2.5" HDD/SSD Carrier
Height upto 15mm, Keylock
Aluminum Tray & Handle



Model	N-49NVMe
Form Factor	1 x 5.25" Drive Bay
Support HDD	4 x 2.5" NVMe, U.2
HDD Height	Upto 15mm
Signal Control	4 x SFF-8643 Connector
Power Control	2 x 15pin SATA
Security Design	Metal Key Lock
Material	Metal Body & Stainless Tray
LED Indication	Power on- Green/ HDD Accessing- Orange
Fan	4020 Fan x 2
Dim & Weight	159(L) X 145.8(W) X 41.6(H) mm/ 0.62kg



Mini SAS HD SFF-8643 Connector

Model	N-49SS-MS
Form Factor	1 x 5.25" Drive Bay
Support HDD	4 x 2.5" SATA 6G & SAS 12G HDD/ SSD
HDD Height	Upto 15mm
Signal Control	1 x Mini SAS HD SFF-8643
Power Control	1 x 15pin SATA
Security Design	Metal Key Lock
Material	Metal Body & Stainless Tray
LED Indication	Power on- Green/ HDD Accessing- Orange Overheating- Red Blinking(Fast)/ Fan Failure- Red Blinking(Slow)
Fan	4020 Fan x 2
Dim & Weight	159(L) X 145.8(W) X 41.6(H) mm/ 0.62kg



HDD Carrier for N-49SS / N-49SS-MS / N-49NVMe
T-109A
For 2.5" HDD/SSD Carrier
Height upto 15mm, Keylock
Stainless Tray & Metal Handle



Overheating & Fan Failure Sensor Kit



Model	N-67SS
Form Factor	1 x 5.25" Drive Bay
Support HDD	6 x 2.5" SATA 6G & SAS 12G HDD/ SSD
HDD Height	Upto 10mm
Signal Control	6 x 7pin SATA
Power Control	1 x 15pin SATA
Security Design	Metal Key Lock
Material	Metal Body & Stainless Tray
LED Indication	Power on- Green/ HDD Accessing- Orange
Fan	4020 Fan x 1
Dim & Weight	159(L) X 145.8(W) X 41.6(H) mm/ 0.68kg
Optional	Sensor kit for Overheating & Fan Failure Overheating- Red Blinking(Fast) Fan Failure- Red Blinking(Slow)



Model	SS-88TM
Form Factor	1 x 5.25" Drive Bay
Support HDD	8 x 2.5" SATA 6G & SAS 6G HDD/ SSD
HDD Height	Upto 7mm
Signal Control	8 x 7pin SATA
Power Control	2 x 15pin SATA
Security Design	Mechanical Lock
Material	Metal Body & Stainless Tray
LED Indication	Power on- Green/ HDD Accessing- Orange
Fan	4020 Fan x 1
Dim & Weight	159(L) X 145.8(W) X 41.6(H) mm/ 0.79kg



HDD Carrier for N-67SS
T-107A
For 2.5" HDD/SSD Carrier
Height upto 10mm, Keylock
Stainless Tray & Metal Handle



HDD Carrier for SS-88TM
T-108A
For 2.5" HDD/SSD Carrier
Height upto 7mm
Stainless Tray & Metal Handle

4 / 8 / 12 HDD

3.5" Server Chassis Backplane Module



Model	N-0104S
Form Factor	For 1U Rackmount Chassis
Support HDD	4 x 2.5"/3.5" SATA 6G & SAS 12G HDD/ SSD
Signal Control	1 x Mini SAS HD SFF-8643
Power Control	2 x 15pin SATA
Security Design	Metal Key Lock
Material	Metal Body & Stainless Tray
LED Indication	Power on- Green/ HDD Accessing- Blue Overheating- Red
Fan	N/A
Dim & Weight	211.1(L) x 432.4(W) x 31.4(H)

6G Version: M-0104S
With 1 x Mini SAS SFF-8087 Connector

Model	N-0208S
Form Factor	For 2U Rackmount Chassis
Support HDD	8 x 2.5"/3.5" SATA 6G & SAS 12G HDD/SSD
Signal Control	2 x Mini SAS HD SFF-8643
Power Control	4 x 15pin SATA
Security Design	Metal Key Lock
Material	Metal Body & Stainless Tray
LED Indication	Power on- Green/ HDD Accessing- Blue Overheating- Red
Fan	N/A
Dim & Weight	204.8(L) x 432.4(W) x 58.2(H)

6G Version: M-0208S
With 2 x Mini SAS SFF-8087 Connectors



Model	N-0212
Form Factor	For 2U Rackmount Chassis
Support HDD	12 x 2.5"/3.5" SATA 6G & SAS 12G HDD/ SSD
Signal Control	3 x Mini SAS HD SFF-8643
Power Control	6 x 15pin SATA
Security Design	Metal Key Lock
Material	Metal Body & Stainless Tray
LED Indication	Power on- Green/ HDD Accessing- Blue Overheating- Red
Fan	N/A
Dim & Weight	209.8(L) x 432.4(W) x 85.4(H)

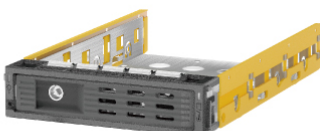
6G Version: M-0212S
With 3 x Mini SAS SFF-8087 Connector

ELS Backplane Modules Are Switchable and Flexible

- Switchable for PCB Kit 6Gbps Version or 12 Gbps Version.
- Flexible to Combine 3.5" and 2.5" HDD Modules into 1U to 4U Height Rackmount Chassis.



(Introduction Video)



HDD Carrier for 3.5" Modules
T-15A
For 2.5"/3.5" HDD Carrier, Keylock
Plastic Handle & Stainless Tray
Dim:172(L) x 105.6(W) x 28.3(H) mm



Optional Digital Numbers
(0-12, 13-24)

2.5" Server Chassis Backplane Module

12 SSD



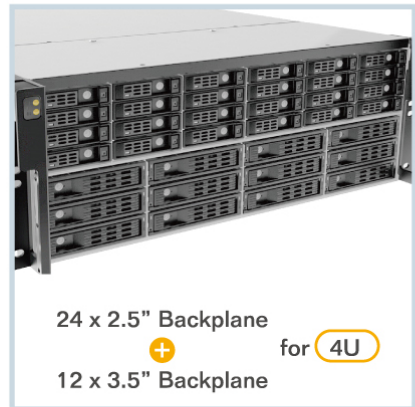
(Introduction Video)



Model	N-0112SS-9F
Form Factor	For 1U Rackmount Chassis
Support HDD	12 x 2.5" SAS 12G & SATA 6G HDD/SSD
Signal Control	3 x MiniSAS HD (SFF-8643)
Power Control	3 x 15pin SATA
Security Design	Metal Key Lock
Material	Metal Body & Stainless Tray
LED Indication	Power on- Green Accessing- Orange Overheating- Red(Fast) / Fan Failure- Red(Slow)
Fan	4020 fan x 6
Dim & Weight	432.6 x 172.3 x 42mm

W/O Fan Version: N-0112SS-9
(No Overheating & Fan Failure)

For The 2.5" Server Chassis Backplane: N-0112SS-9F, You Can Use 1PC for 1U, or Mix Match with 3.5" N-0104S for 2U, or Other Multiple Combinations for More Than 2U Chassis.





HDD Carrier for N-0112SS-9F
T-109A
For 2.5" HDD/SSD Carrier
Height upto 15mm, Keylock
Stainless Tray & Metal Handle



Sales Center

Vision3 Information Co., Ltd.

 1F.,No.22,Rixin St.,Shulin Dist.,
New Taipei City 238,
Taiwan (ROC)


 Tel: +886-2-2683-2135

 E-mail: V3.service@elstorage.com.tw

Factory

PLE Technology Co., Ltd.

 Guangdong Sheng Dongguan Shi
Tangxia Zhen, Qinghutou
Qingping Lu 5 Hao, China.

 Tel: +86-769-8695-7899

